



CLARKSVIEW APARTMENTS

Welcome to Clarksvie Apartments...

Clarksvie Gardens offers the ideal combination of a peaceful setting just two short blocks away from the convenience of Reisterstown Road. Located in a desirable neighborhood of Northwest Baltimore City, the community is a quick walk to Reisterstown Plaza and all the shopping, dining and entertainment options it affords.

Choose from a variety of spacious two and three bedroom apartments, each with open floor plans and modern kitchens. Our residents also enjoy additional community features including controlled building access and use of our open courtyard space.

FEATURES & AMENITIES

Spacious Open Floor Plans

Air Conditioning

Private Outdoor Space (Balcony)

Renovated Kitchen Options

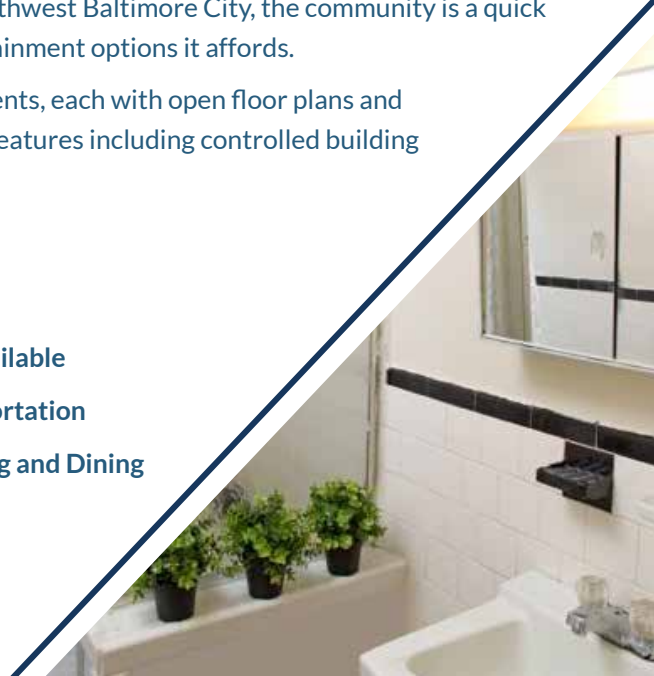
On-site Laundry

Additional Storage Available

Close to Public Transportation

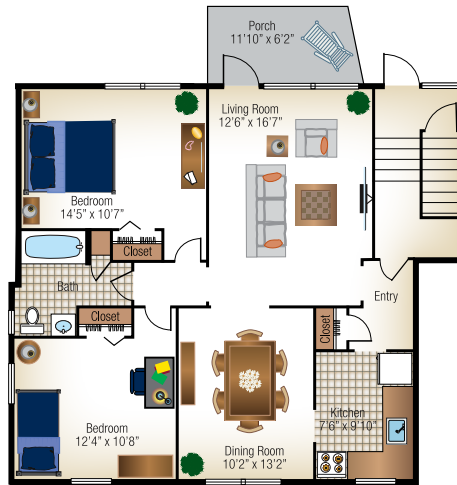
Convenient to Shopping and Dining

BLUE OCEAN 3701 Clarks Lane
Baltimore, MD 21215
443-278-9322 • blueocean.com

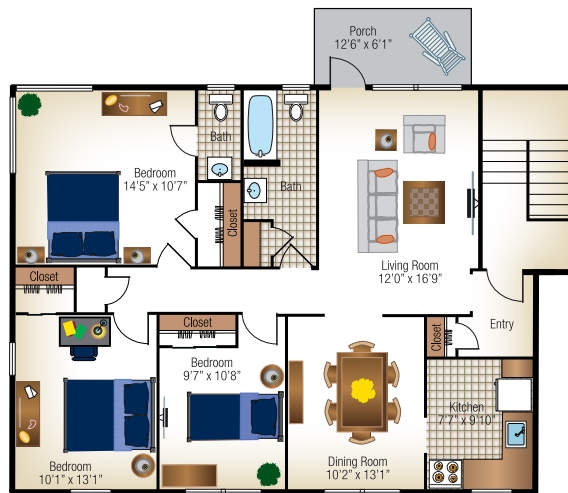




2 BEDROOM (1047 sq. ft.)



3 BEDROOM (1304 sq. ft.)



All sizes and measurements are approximate. Furniture not to scale.

BLUE OCEAN