



Welcome — HOME —

The Pointe at County Crossing boast newly renovated homes and new community amenities. Residents enjoy the charm of suburban living with the conveniences of city life in this established community. Some of Maryland's best shopping, dining, and entertainment can be found 3.5 miles away at White Marsh Town Center and The Avenue at White Marsh.

PROPERTY *Highlights*

- Washer and Dryer in All Townhomes
- Private Patio and Balcony
- Near Public Transit
- Car Wash Station (coming soon)
- Dog Park (coming soon)
- Walking Distance to Shopping & Dining

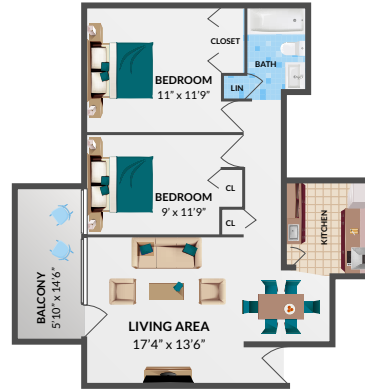


WHICH FLOORPLAN FITS YOUR *Style?*

**1 BEDROOM / 1 BATHROOM
APARTMENT**
750 sq. ft.



**2 BEDROOM / 1 BATHROOM
APARTMENT**
850 sq. ft.



**2 BEDROOM / 1 BATHROOM
TOWNHOME**
900 sq. ft.



**3 BEDROOM / 1 BATHROOM
TOWNHOME**
1080 sq. ft.

